

Country's Best Log Homes presents

# COZY cabins

THE ULTIMATE CABIN GUIDE

6 comfy homes  
800 to 2,600 sq. ft.

**\$50k Cabin:  
What You Get**

**plus**

6 Favorite Styles  
Cabin Design Essentials  
5 Great Rentals  
Latest Decor Ideas

[www.loghome.com](http://www.loghome.com)



The main level of this 2,380-square-foot log home includes a bedroom, bath, kitchen, dining room, living room and study/music room downstairs, with an additional bedroom, bath and loft upstairs. The home's 36-by-40 foot-print required larger beams and extra tie beams to accommodate the 36-foot width.



# *a perfect* plan

**From selecting an idyllic setting to constructing a scaled home model, one North Carolina couple takes the time and effort to perfect the design of their ideal mountain retreat.**



Connie and Fred Woolard's inviting home features eastern white pine logs with a hand-hewn finish on the exterior and a V-groove smooth finish on the interior.

The sunflower dinnerware (right) was the inspiration for the color scheme in the kitchen. Cabinets, countertops, accent wall color and tile pick up colors in the dishes.

Although life in the fast lane has its appeal, some prefer a slower-paced existence, soaking in their natural surroundings. Such simplified living enticed Connie and Fred Woolard to trade their busy lifestyle in Cary, North Carolina, for the relaxing atmosphere of Fleetwood, North Carolina, nestled in the Blue Ridge Mountains.



“Cary is a tiny town that exploded—it became the up-and-coming place to live,” says Connie, a Michigan native who has lived in North Carolina since 1980. When town traffic started to increase and trees were taken down to make way for building projects, the Woolards decided to find an area with fewer people and plenty of nature.

Connie first visited Fleetwood (population 1,917) while staying at the River Farm Inn Bed & Breakfast for a silent auction event. She brought her husband to see the area, and they both knew they had found where they wanted to live. “The people drew us to the area—we felt at home,” explains Connie, who currently works part time at nearby Appalachian State University and is also a realtor. Fred, originally from Little Washington, North Carolina, works full time as a software developer at the university. “The people are a real treasure: self-sufficient, caring and neighborly.”

When the Woolards asked the owners of the inn for the





name of a realtor, the owners mentioned that they had property nearby for sale. The Woolards' home now sits on that three-and-a-half acre lot as part of the River Run development. "It's not overdeveloped," Connie says. "There are 18 home sites in the development and 13 homes built. Only three are full-time residences."

Located 3,200 feet above sea level on a beautiful mountain, the Woolards' home, which features 6-by-12-inch kiln-dried eastern white pine logs, provides a stunning 270-degree view all around, with the New River running below. The couple did extensive research on log-home manufacturers before opting to work with

Nicole Robinson, vice president of Log Homes of America, Inc., who also served as general contractor through Logs America, LLC.

The Woolards designed the 2,380-square-foot home themselves using a software program. "We were fledglings at figuring out how to design a house," says Connie. "But we lived in enough houses to know what we wanted." One main goal was to incorporate an open-floor concept with a lot of windows so that the house lives larger than it is, which they executed well. "We didn't change much in their plan from the final drawings to the field product because they knew exactly what they wanted and had great visual perception





Furniture (above) from the Woolards' previous homes complements the wood tones, fireplace and 8-inch yellow knotty pine floors stained to a custom honey color. The kitchen and dining area (top right), has plenty of natural light flooding through the windows. The Woolards also installed a generator to run the refrigerator, furnace and microwave in the event of a power outage.



## MASONRY MODIFICATIONS

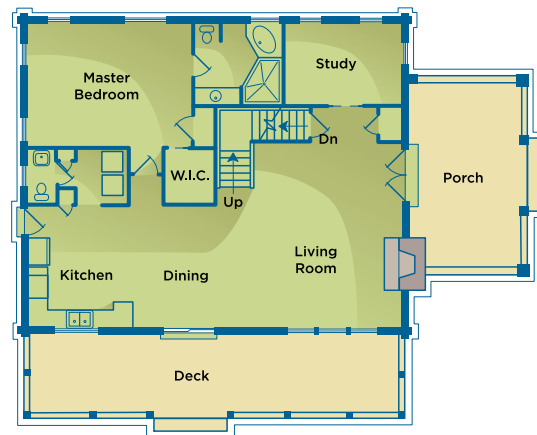
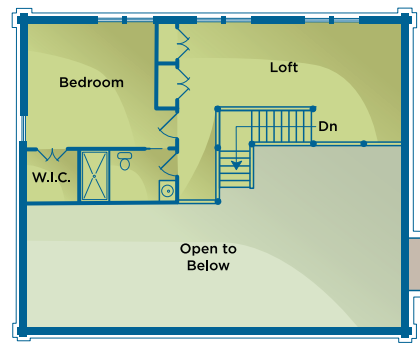
**T**he fireplace is often the focal point of the living room, and many feature distinctive details. Connie and Fred Woolard's nearly 20-foot-tall fireplace comprises full masonry, with a cultured stone cover replicating natural stone—a look achieved through airbrushing—to decrease the cost and weight of using the real thing.

Creating a masonry fireplace is a painstaking process. "The most difficult part of the masonry fireplace is constructing the internal throat and slope of the fireplace," notes general contractor Nicole Robinson. "This is what directs the smoke to roll and draft up the chimney." The fireplace also boasts a dramatic arched opening, which can also prove to be a challenge in the construction process. "You really have to search for just the right piece that is shaped correctly to accent the opening," she says.

Using different metals gives detail and depth to the hand-made firescreen—a housewarming gift from Log Homes of America. It showcases a wilderness motif that complements the moose-themed artwork above the knotty pine mantel.







The guest bedroom (below) has a fantastic view of the wooded hill on the property. Charming quilts covering the bed and a stand, along with the country-themed picture above the bed, create an inviting atmosphere for friends and family.

The built-in ceiling-high maple cabinets (above) in the kitchen were designed with a creamy vanilla antique finish. A custom fern-green island and 12-inch tan tile flooring enhance the look.


of room sizes and layouts,” the general contractor adds. “This is a very difficult trait to develop.”

The Woolards were an integral part of the building process as well, even going so far as to create a cardboard model that they brought to the site to help with visual placement on the lot. “Connie and Fred moved to the area and rented a home so they could be actively involved in portions of the construction,” notes the general contractor. “I enjoyed working with Connie so much because she was thorough and detailed that I actually hired her to help me out for a while after she got moved in.”

Such thorough planning has left the Woolards with no regrets. “By designing the home ourselves, we got what we wanted,” says Connie. “We both say we would build this house again.”







The doorway to the music room, housing an extensive collection of instruments for accomplished musician Connie, is embellished with custom etched glass featuring a snowy river and birch trees. Connie drew the original design.

#### resources:

**Square footage:** 2,380

**Bedrooms:** 2

**Bathrooms:** 2.5

**Log species:** eastern white pine

**Builder/general contractor:** Logs America, LLC, Banner Elk, NC (828-963-7755; logsamerica.com)

**Cabinetry:** Master Craft Inc., Wilkesboro, NC (336-903-8871; mastercraftshowroom.com)

**Cultured stone veneer:** Eldorado Stone, San Marcos, CA (800-925-1491; eldoradostone.com)

**Etched glass doors:** Glass Works of Raleigh Inc., Raleigh, NC (919-231-2155)

**Log supplier:** Log Homes of America, Banner Elk, NC (800-564-8496; loghomesofamerica.com).

**Masonry:** Trivette Masonry, West Jefferson, NC (336-877-4877)

**Roofing:** GAF-Elk, Wayne, NJ (973-628-3000; gaf.com)

**Stain:** Sikkens (866-745-5367; nam.sikkens.com)

**Windows:** JELD-WEN, Klamath Falls, OR (800-535-3936; jeld-wen.com)

# Coos and Ahhs come standard in our log homes!



*Our 30 years of log home industry experience gives us the unique ability to mesh your lifestyle needs with quality log and structural timber design to create YOUR perfect log home.*

*Contact one of our talented dealers and give us the opportunity to bring your dream log home to life.*



LOG HOMES OF AMERICA, INC.

9649-1 Highway 105 South • Banner Elk, NC 28604 • (800) 564-8496  
[info@loghomesofamerica.com](mailto:info@loghomesofamerica.com) • [www.loghomesofamerica.com](http://www.loghomesofamerica.com)

## FIND DEALERS NEAR YOU!



**Bear Creek Log Homes**  
Mocksville, NC  
[www.loghomesofnc.net](http://www.loghomesofnc.net)  
336-751-6180

**Cabins 4 U**  
Luray, VA  
[www.loghome-lovers.com](http://www.loghome-lovers.com)  
540-743-7355

**Cabin Creek Builders, LLC**  
West Jefferson, NC  
[cabincreekbuilders@yahoo.com](mailto:cabincreekbuilders@yahoo.com)  
336-877-3612

**Cub Hill Log Homes**  
Moorefield, WV  
[cubhill@hardy.net](mailto:cubhill@hardy.net)  
304-434-3760

**Custom Contractors**  
Chambersburg, PA  
[nfenby@gmail.com](mailto:nfenby@gmail.com)  
717-860-6878

**Deer Creek Log Homes**  
Benton, IL  
[www.deercreekloghomesofamerica.com](http://www.deercreekloghomesofamerica.com)  
618-629-2177

**Deer Valley Log Homes**  
Bethlehem, WV  
[deervalleyloghomes@comcast.net](mailto:deervalleyloghomes@comcast.net)  
304-905-0566

**Five Star Log Homes**  
Chelsea, OK  
[Loghm4u@hughes.net](mailto:Loghm4u@hughes.net)  
918-779-9811

**Full Quiver Log Homes**  
Scottsville, VA  
[fullquiverloghomes@gmail.com](mailto:fullquiverloghomes@gmail.com)  
434-286-2257

**Henning Farm Log Homes**  
Thomfield, MO  
[henningloghomes@yahoo.com](mailto:henningloghomes@yahoo.com)  
417-265-3764

**Lake Marion Log Homes**  
Summerton, SC  
[lmloghomes@earthlink.net](mailto:lmloghomes@earthlink.net)  
803-478-2009

**Lakeshore Log Homes**  
Clemson, SC  
[lakeshorelogs@aol.com](mailto:lakeshorelogs@aol.com)  
864-643-0687

**Leatherwood Log Homes**  
Ferguson, NC  
[Wes@leatherwoodmountains.com](mailto:Wes@leatherwoodmountains.com)  
336-973-5028

**L.O.G.S.**  
Asheville, NC  
[www.logswnc.com](http://www.logswnc.com)  
828-628-0564

**Logs America, LLC**  
Banner Elk, NC  
[www.logsamerica.com](http://www.logsamerica.com)  
800-564-8496

**Log Home Specialties, LLC**  
Charlotte, NC  
[www.loghomespecialtiesllc.com](http://www.loghomespecialtiesllc.com)  
704-607-3282

**McCartney Builders**  
Vineland, NJ  
[rmclog@comcast.com](mailto:rmclog@comcast.com)  
856-507-9975

**Northwest Log Homes**  
Westminster, MD  
[nwloghomes@hotmail.com](mailto:nwloghomes@hotmail.com)  
410-848-5926

**Old Powhatan Log Homes**  
Powhatan, VA  
[oldpowhatanlogs@aol.com](mailto:oldpowhatanlogs@aol.com)  
804-598-5077

**Osage Log Homes**  
Linn, MO  
[rwilliams@learfield.com](mailto:rwilliams@learfield.com)  
573-680-2833

**Phoenix Family Building Co.**  
Centerview, MO  
[www.pfbchomes.com](http://www.pfbchomes.com)  
660-656-3891

**Roanoke River Valley Log Homes**  
Union Hall, VA  
[www.ilovelogs.com](http://www.ilovelogs.com)  
540-420-0338

**Rocky Branch Farms, Inc**  
Skipwith, VA  
[www.rockybranchfarms.com](http://www.rockybranchfarms.com)  
434-372-0552

**Sleepy Mountain Log Homes**  
Martinsburg, WV  
304-229-1214

**SSD Construction**  
Savannah, TN  
[robertmarch@bellsouth.com](mailto:robertmarch@bellsouth.com)  
731-727-5398

**Still Waters Log Homes**  
Cumberland, VA  
[www.stillwatersloghomes.com](http://www.stillwatersloghomes.com)  
804-492-9999

**West Virginia Log Homes**  
Grafton, WV  
[polingsconstruction@gmail.com](mailto:polingsconstruction@gmail.com)  
304-265-2010